

FEATURING...

WARP SPEED® » **IN STOCK**
for quick delivery!



Sherpa & Shire »

Sherpa & Shire have been the hallmark of durability and cleanability since their inception. Cited by Interior Design magazine for their longevity as the best of the past 25 years, these fabrics are nearly impervious to damage.

UPHOLSTERY FABRIC **LL***
100% Marquésa Lana®

Marquésa 
Lana®

* Covered by a Limited Lifetime performance warranty.

Sherpa & Shire *Marquésa Lana polyolefin is an environmentally friendly product that entails a mode of manufacturing that not only prevents damage to the environment, but actually reduces the carbon footprint by utilizing waste products from gasoline manufacturing. It is a byproduct of post-industrial waste and its manufacture produces no waste product.*



Sherpa Whisper



Sherpa Aquatint



Sherpa Spa Blue



Sherpa Teal



Sherpa Barnyard



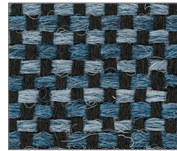
Sherpa Mocha



Sherpa Zinc



Sherpa Overcast



Sherpa Blue Belt



Sherpa Bondi Blue



Sherpa Turquoise



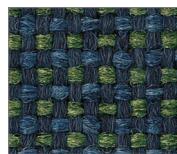
Sherpa Concrete



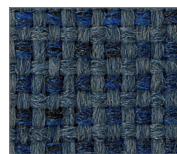
Sherpa Alloy



Sherpa Blue Heather



Sherpa Mariner



Sherpa Commodore



Sherpa Cordon Bleu



Sherpa Farmhouse



Sherpa Shadow



Sherpa Denim



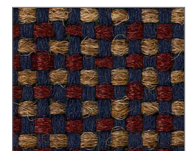
Sherpa Chesapeake



Sherpa Bluejay



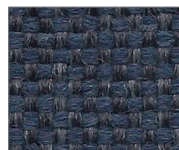
Sherpa Viola



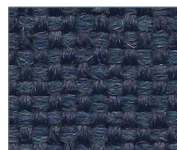
Sherpa Country



Sherpa Dark Night



Sherpa Gettysburg



Sherpa Delft Blue



Sherpa Special Blue



Sherpa Grey Lilac



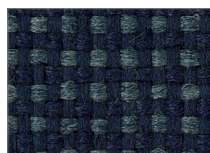
Sherpa Purple Velvet

WARP SPEED® **IN STOCK**
for quick delivery!

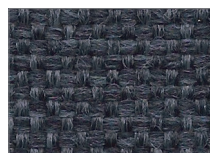
In our continuing efforts to provide you with the best service and quickest delivery, our most in-demand Sherpa and Shire colors are now in our Warp Speed® In Stock program.



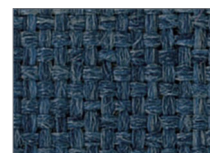
Sherpa Black Marble



Sherpa Ink



Sherpa Keydet Blue



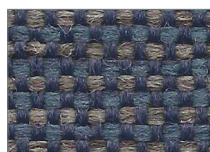
Sherpa Academy Blue



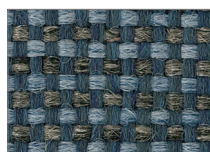
Sherpa Indigo



Sherpa Greystone



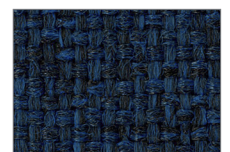
Sherpa Merrimac



Sherpa Steel Blue



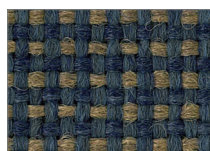
Sherpa Midnight



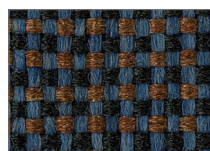
Sherpa Dark Blue



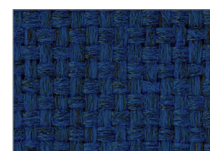
Sherpa Grey Mix



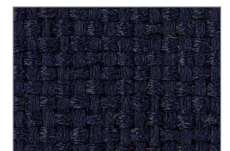
Sherpa Tuscan Blue



Sherpa Titan Blue



Sherpa Royal



Sherpa Navy

Its built in resistance to staining and wear eliminates the need for after market stain resistant finishes. It is recyclable and is unique in its utilization of conservation methods from inception to disposal.

Marquésa 
Lana®



Shire Neutral



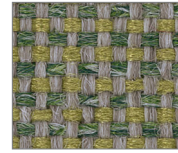
Sherpa Amber



Shire Cider



Shire Sage



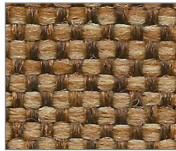
Shire Sprite



Shire Horizon



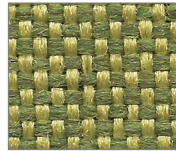
Sherpa Gargoyle



Shire Blair Brown



Shire Acorn



Shire Dill



Shire Vintage Green



Sherpa Jade



Shire French Rose



Shire Koala



Sherpa Snappy



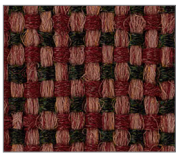
Sherpa Tortoise



Shire Pesto



Shire Verde



Shire Black Cherry



Shire Bricktown



Shire Cameo



Shire Woodstock



Sherpa Ivy League



Sherpa Hunter



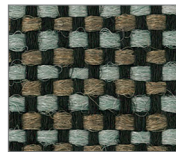
Sherpa Concord



Sherpa Grape



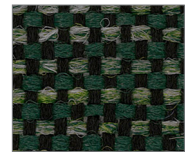
Sherpa Coffee



Shire Aqueduct



Sherpa Billiard

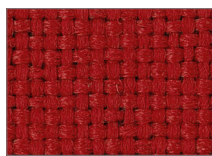


Shire Library Green

We have carefully analyzed the popularity of the colors, and the resultant winners are represented here and are all available for immediate shipment. Only the items below the line are in the Warp Speed® Program.



Shire Ascot



Sherpa Cardinal



Shire Travertine



Shire Sesame



Sherpa Grey Heather



Shire Red Rose



Sherpa Scarlet



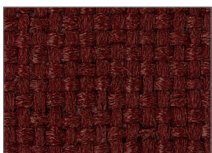
Sherpa Brown Haze



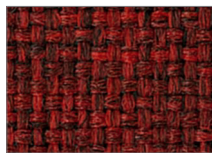
Shire Hopsack



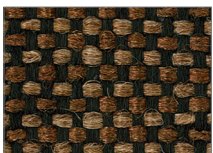
Shire Fossil



Sherpa Maroon



Sherpa Garnet



Shire Espresso



Shire Stonewall



Sherpa Black

Sherpa & Shire UPHOLSTERY FABRIC

LL*

Patterns are covered by a limited lifetime performance warranty. Contact your sales representative for written warranty terms and conditions.

TECHNICAL INFORMATION

Fiber: 100% Marquésa Lana®

Backing | Finish: Acrylic

Abrasion Resistance: 250,000 double rubs (wire screen)

Weight: 16.0 ounces per linear yard (±1 oz.); 494 g/m

Width: 54" (137-140 cm)

Repeat: None (Pattern is woven up the roll and suitable for railloading)

Lightfastness: 400 Hours, Class 5

Colorfastness: Wet - Class 5 | Dry - Class 5

Seam Slippage: Warp - 91 lbs | Fill - 95 lbs.

Cleaning Instructions: WS - For water-based stains, use mild detergent foam or upholstery shampoo. For oil based stains, spot clean fabric with a dry cleaning solvent, being sure to test area first.

Flame Resistance: California Technical Bulletin 117-2013; NFPA 260

This pattern does not contain fire retardant additives.

ABSECON

Fabrics by Absecon Mills, Inc.
www.absecon.com

06/2022 | For additional cards or memo samples:

email samples@absecon.com



ACADEMIC



CORPORATE



HEALTHCARE



HOSPITALITY



TRANSPORT



WORSHIP



Absecon Mills is focused on being a responsible corporate entity and we are continually striving to find ways to help preserve our environment, increase energy efficiency and reduce waste. Our mode of manufacturing is specifically designed to prevent damage to the environment. Our products are woven using wind power and many are constructed with polypropylene (a by-product of gasoline manufacturing, utilizing post-industrial waste) and recycled polyester, which helps keep post-consumer waste in the material stream and out of landfills. Absecon offers finishes that use ten times

less fluorocarbons than conventional finishes and are SCS Indoor Advantage Gold certified. We participate in a fabric recycling program and work hard to lessen our footprint on the environment. For more information on our green initiatives, please visit www.absecon.com.



WOVEN WITH
WIND POWER

Colors may vary slightly from dye lot to dye lot.

*ASTM-D-4034: Seam 12mm from edge using 7 stitches per 25mm (1"), plain lock stitch and a 22 ballpoint needle)

